

SEHAN
ELECTOOLS

HYBRID DIGITAL SCREWDRIVERS

Servo Motor control technology
Hybrid with compressed air
World first solution & Patent



8-608-2 BUNDANG TECHNO PARK
SEONGNAM-SI, KYONGGI-DO,
KOREA (463-760)
Tel.: 82-31-701-9855
Fax: 82-31-701-9853
<http://www.sehan.co.kr>
<http://www.sehan-tools.co.kr>

Catalog 3rd edition, July 2015

8-608-2 BUNDANG TECHNO PARK, SEONGNAM-SI
KYONGGI-DO, KOREA (463-760)
TEL : 82-31-701-9855 FAX : 82-31-701-9853

<http://www.sehan.co.kr>
<http://www.sehan-tools.co.kr>

Hybrid Screwdriver System



Replace over 3 Screwdrivers
with easy Torque, Speed Shifting
● Best choice for Cell line Manufacturing



PC Communication by
USB or RS232



32Bit Microprocessor



Built in Screw counter



Worldwide Patent



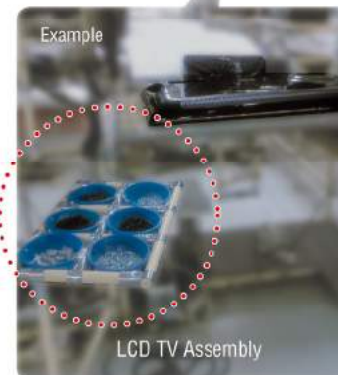
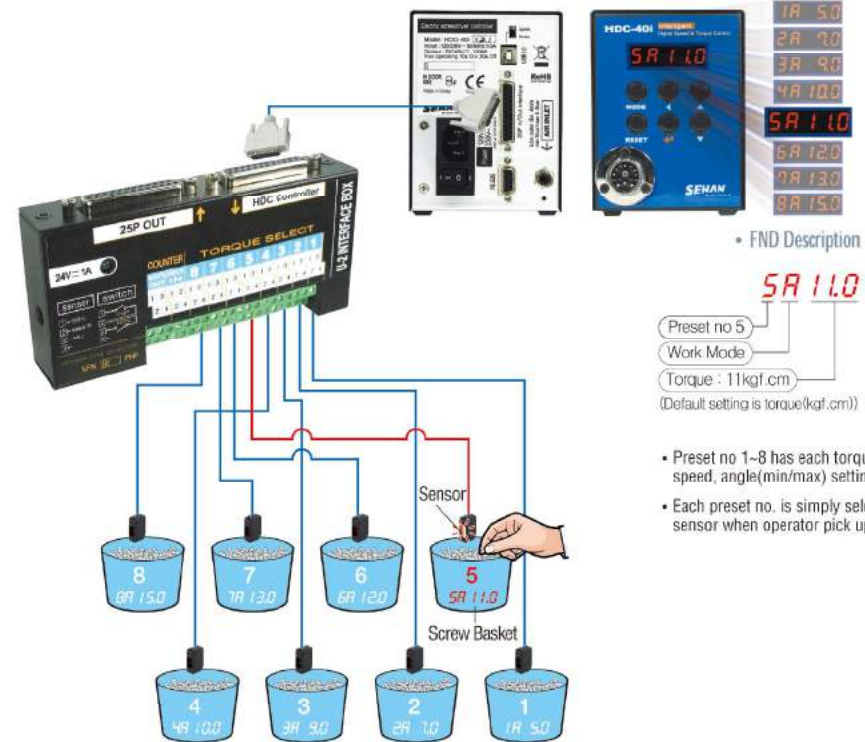
Best Quality Brushless motor used

Data monitoring &
Quality control



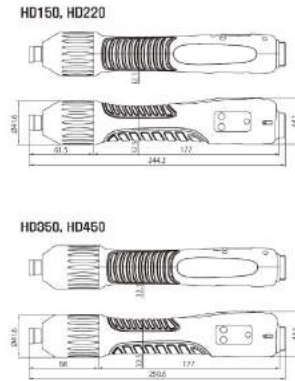
25P I/O Remote control &
Preset no seleting by sensor

Example of Shifting various Torque by sensor



8 different torque including speed can be applied by one Hybrid screw driver.

Brushless Motor Used

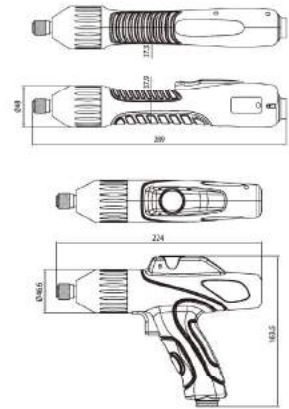


• Controller :
HDC-40i



- Swiss made BLDC motor used
- ESD free by body grounding
- Torque repeatability $\pm 3\%$
- Long life time over 5 million cycle
- Inside memory chip for tool data
- Automation system applicable

Brushless Motor Used



• Controller :
HDC-35i



Model : HD150-A

- Base model
- 1/4" Hex bit socket

MODEL	TORQUE(Kgf.cm)	SPEED(rpm)	START	Di. L, W	CONTROLLER
HD081	3.0~8.0	500~1,700	LEVER	0.44	HDC-40i
HD150	5.5~15.5	500~1,700		0.44	
HD220	7.0~22.0	400~1,250		0.44	
HD350	10.0~35.0	300~740		0.51	
HD450	10.0~45.0	300~600		0.51	
HD081P	3.0~8.0	500~1,700	PUSH	0.44	
HD150P	5.5~15.5	500~1,700		0.44	
HD220P	7.0~22.0	400~1,250		0.44	
HD350P	10.0~35.0	300~740		0.51	
HD450P	10.0~45.0	300~600		0.51	

• Standard packing - Screwdriver(1), 14P-3M cable(1), Test bits(2)

Accessory

- Data manager
7" Touch Screen



• U-2 Interface Box



- Standard
Driver Cable 14p 3M



- Option
Pistol Grip



• Cable



BIT SOCKET



Accessory

- Data manager
7" Touch Screen



• U-2 Interface Box



- Standard
Driver Cable 14p 3M



- Option
Cable

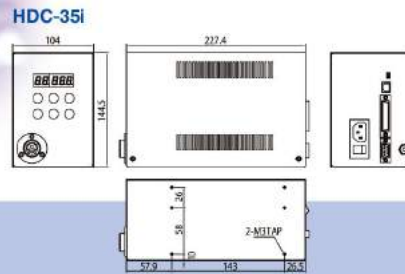
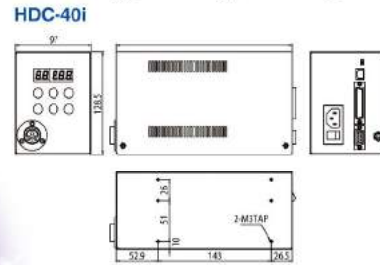


BIT SOCKET



Not available for
HD100N and PHD100N

■ POWER CODE



HDC-40i | HDC-35i

No	ITEM	SPECIFICATION	
1	Model	HDC-40i	HDC-35i
2	Input	Electric	AC110VC or AC220V, 50~60Hz
3		Air pressure	Min 4.5 bar / Max 6 bar
4	Output	Electric	DC40V, 3A / DC35V, 4A
5	Fuse		AC250V, 10A / AC250V, 15A
6	Dimension / Weight	Refer to the drawing	
7	Preset parameters	Torque, Speed & Angle in 8 preset numbers	
8	Selecting the preset no.	1) Front panel button 2) 25P I/O interface 3) 8 direct sensor connecting port 4) F1 button on the driver	
9	Torque Calibration	From -20% to +20%	
10	Auto detection of the connected Driver	Auto detection of the offset value from the EEPROM on the driver	
11	Error display	Error display by code no. in system, communication & pattern error group	
12	Fastening quality control	OK/NG monitoring of screw fastening by preset pattern of angles, times	
13	Screw Counter	Save the total screw number, and monitoring the number of OK fastening screws.	
14	Monitoring and parameter	Monitoring and parameter setting on the PC program (MS Windows base)	
15	Communication port	USB or RS232C	

Set and monitor your tool, your tightening environment on free PC Software, **Hi-Manager**

Error Monitoring

Screwcounter Monitoring number of screw fastening

Realtime monitoring of all tightening

HDC setting set Torque, Speed, Angle, soft start, Torque tuning each preset